

Eco²truxure™ Power
Innovation At Every Level

**ARE YOU
FUTURE
READY?**

Masterpact MTZ
circuit breakers



schneider-electric.com

Life Is On

Schneider
Electric



Contents

- > Power distribution is changing.
- > Now, you're ready ...
- > A new digital user experience
- > Innovation At Every Level
- > Services and support

Power distribution is changing.

Smart cities. Smart grids. Smart buildings. Smart industries. The world is becoming more connected, electric, digitized, decarbonized, and decentralized. Power distribution is facing new regulations, becoming more seamless and connected, but also becoming more dispersed and vulnerable.

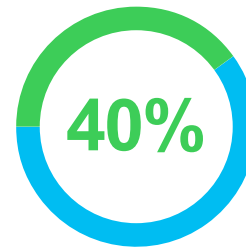
For this Internet-of-Things era, you need a future-ready circuit breaker that increases efficiency, can adapt to your evolving needs, and helps to ensure safety, reliability, security, and sustainability.

At Schneider Electric, we've been setting the standard in air circuit breakers since 1987. We did it first with the Masterpact™ M, and then with the groundbreaking Masterpact NT/NW circuit breakers. Each Masterpact innovation has incorporated the most advanced features and has established a legendary reputation for power uptime and protection against cable overloads, short circuits, and insulation faults — even in the toughest environments.

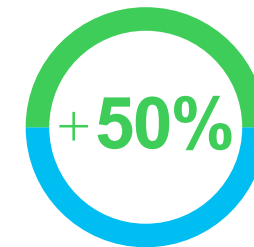
Schneider Electric is redefining electrical distribution with our new EcoStruxure™ Power portfolio of smart, digitized products that enhance connectivity, real-time operation, and smart analytics.

And the latest Masterpact innovation? Read on to discover the future of power distribution.

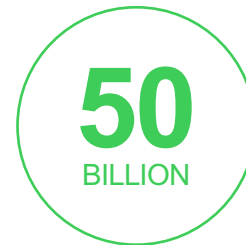
Buildings, industry, and energy



AMOUNT OF AVAILABLE ENERGY CONSUMED BY BUILDINGS WORLDWIDE¹



LEVEL OF INCREASE IN GLOBAL INDUSTRY ENERGY DEMAND BY 2050²



NUMBER OF SMART, CONNECTED DEVICES BY 2020³



EXPECTED UPTIME FOR BUILDINGS WORLDWIDE

¹ UN Report: World Urbanization Prospects, 2014

² UN Report: Global Industrial Energy Efficiency Benchmarking, 2010

³ Cisco White Paper: The Internet of Things: How the Next Evolution of the Internet Is Changing Everything, 2011

As power distribution changes, expectations grow, increasing the demand for solutions that enhance safety, offer greater cybersecurity, and are more reliable, efficient, and sustainable.

Building investors want

- Short but reliable project lead times
- Flexible and scalable investments
- Valuable energy labels and ratings
- Compliance to building codes and regulations

Building tenants want

- Full power availability
- Energy expense optimization
- Tight control of maintenance costs
- Occupant comfort and productivity

Facility managers want

- To provide high-quality service
- To keep electrical system 100% fail-safe
- To stay connected and act remotely
- To minimize critical fault time

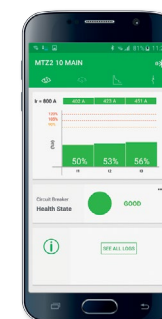


NOW, YOU'RE READY...

Built on the legendary performance and reliability of the Masterpact line.

Masterpact MTZ circuit breakers prepare you for the future of power distribution. Smart connectivity. Remote monitoring. Easy and instant customization via digital modules. Masterpact MTZ circuit breakers bring the future-ready EcoStruxure Power capabilities you need to build smart, secure, and sustainable power distribution systems:

- Smartphone connectivity for wireless alerts and maintenance
- Precise Class 1 power meter built in for energy-saving capabilities
- Easy customization via digital modules
- Intuitive Micrologic™ X control unit
- Easy installation using established architectures
- Seamless integration with building and energy management systems via Smart Panel architecture
- Demonstrated compliance with standards



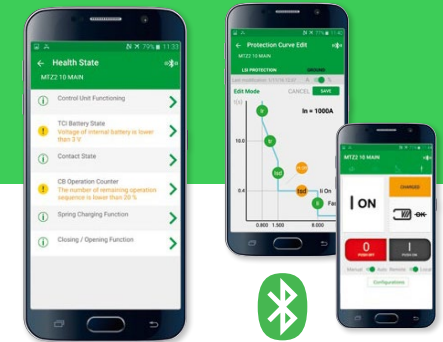
With Masterpact MTZ breakers, enhanced connectivity equips you for the future of power distribution.

Available from 630 A to 6300 A.



...CONNECTIVITY READY

Stay connected — Avoid surprises and downtime with the Masterpact MTZ app.



Secure wireless connection locally

- Connect locally via contactless, wireless, and secure Bluetooth® and NFC connection
- Review energy consumption, power quality, phase balance, health status
- Review status via smartphone: Self-diagnosis, load levels, warnings and alarms, protection settings
- Review locally in the electrical room on the Micrologic X display, on your smartphone, or on your switchboard display

Remote notifications anywhere

- Review status anywhere via Facility Expert digital and collaborative maintenance logbook: Periodic inspection, warnings, and alarms
- Review remotely in the control room with EcoStruxure Facility Advisor, Power Monitoring Expert (PME), Power SCADA Operation (PSO), Building Operation (BO)
- Get real-time alerts and self-diagnosis: Event type, severity level, time stamp
- Receive predictive measures with easy-to-interpret data

Comprehensive crisis management

- In case of a trip, restore power quickly and safely using your smartphone
- Key event data saved (before tripping) via NFC connection even without power
- Root cause explanation and step-by-step breaker reclosing and power recovering, thanks to digital modules:
 - Waveform Capture on Trip Event
 - Power Restoration Assistant
 - Masterpact Operation Assistant

...PRECISION READY

Access new energy-saving capabilities — A built-in Class 1 power meter gives you precise power measurements for greater efficiency.

- First air circuit breaker with built-in, third-party certified Class 1 active power meter (IEC 61557-12)
- Instant and comprehensive views of your building's power consumption
- View energy usage analysis, trends, and energy costs allocation
- Compliant with international regulations: ISO 50001 and IEC 60364-8



Class 1 accuracy for active power and energy management.



...INSTALLATION READY

Streamline configuration and commissioning.

Retrofit seamlessly

Updating from Masterpact NT/NW breakers is easy.

Masterpact MTZ circuit breakers have the same power connection, breaking capacity, thermal properties, and footprint.

Configure quickly

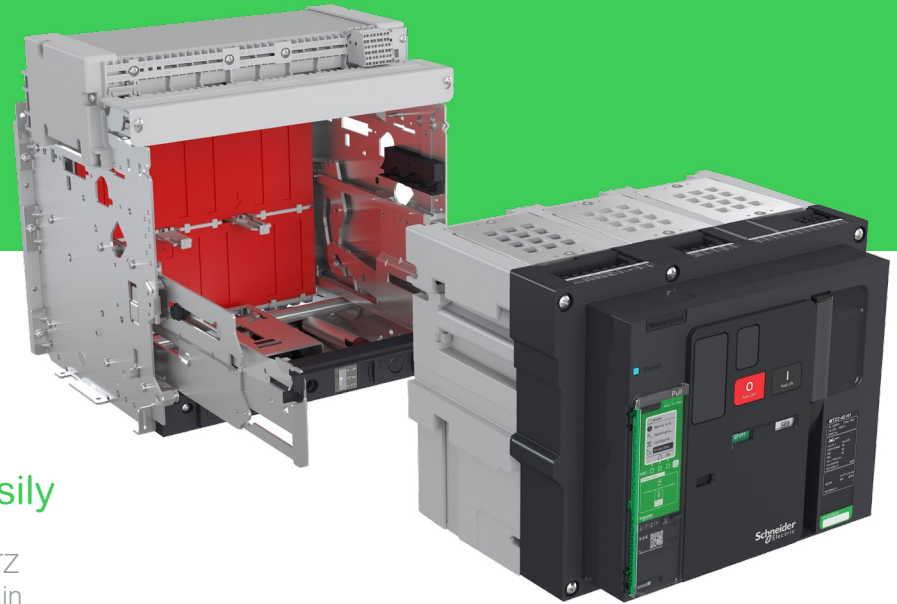
Designing your Masterpact MTZ breaker to fit your needs is simple.

MyPact software makes configuration and ordering quick and easy.

Commission easily

Get your Masterpact MTZ breaker up and running in no time.

With Ecoreach software, commissioning and maintaining your circuit breaker is seamless and intuitive.

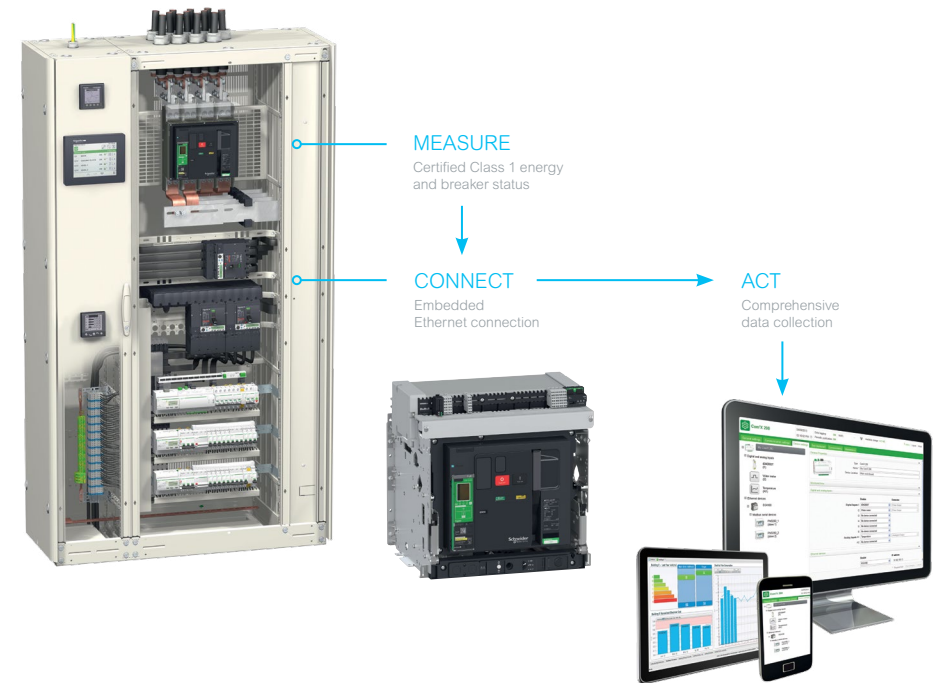


Installation and updates are seamless, quick, and easy.

Smart Panels integration

Masterpact MTZ integration with Smart Panels architecture generates valuable data, enabling:

- Connection to EcoStruxure Power software unlocks your electrical system's potential
- Remote monitoring and control with any supervision system to carry out predictive and preventive maintenance
- Remote notification and maintenance planning with Facility Expert digital maintenance logbook
- Proactive facility management with EcoStruxure Facility Advisor, Power Monitoring Expert, Power SCADA Operation, and Building Operation software.
- Asset life cycle management and condition-based maintenance via equipment monitoring
- Asset and alarm management
- Energy efficiency and power quality management
- Compliance with latest regulations for energy-efficient buildings



www.schneider-electric.com/smart-panels

A new digital user experience

With the Masterpact MTZ circuit breaker, every stage of the project — from designing and configuring to operating and maintaining — is streamlined using its digital capabilities.

DESIGN



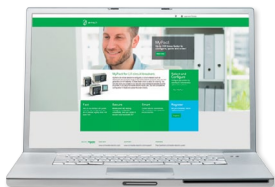
Ecodial Software

Single-line diagram design software that calculates and sizes your electrical installation.

Ecoreal software

Quick configuration and quotation tool for switchboards.

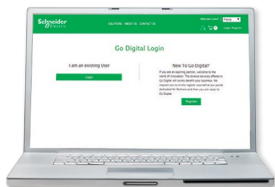
CONFIGURE AND ORDER



MyPact

Configure and order Masterpact MTZ to save time and ensure accuracy. config.schneider-electric.com

CUSTOMIZE OR UPGRADE



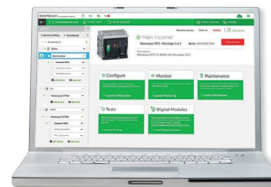
GoDigital marketplace

Purchase additional digital modules for even more visibility and efficiency over the Masterpact MTZ circuit breaker life cycle.

Advanced functions

- Protection
 - Metering
 - Diagnostics and maintenance
- godigital.schneider-electric.com

BUILD AND COMMISSION



Ecoreach

Commission and upgrade easily with protection setting and factory-acceptance test.

OPERATE AND MAINTAIN



EcoStruxure Power monitoring software

Power Monitoring Expert
Power SCADA Operation
Building Operation
Facility Advisor

schneider-electric.com/facilityinsights

A. Remotely in the control room

PowerView™ software and embedded web pages
Obtain data visualization and reporting for increased efficiency.

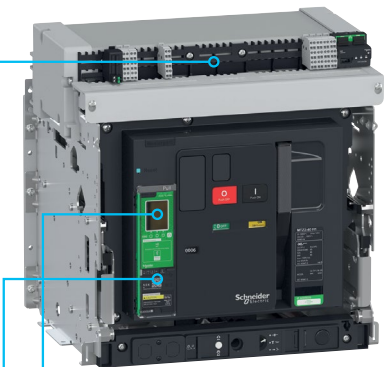
B. Locally in the facility room



Masterpact MTZ app



Status "at a glance"



C. Stay notified any time

The Facility Expert maintenance logbook app
Track facility data and receive alerts in case of power events and scheduled maintenance.

schneider-electric.com/facilityhero



app.facilityhero.com



...ENVIRONMENT **READY**

Keep your electrical system online in the harshest environments — Masterpact MTZ circuit breakers give you proven reliability by going beyond standards.

Built to endure:

- Voltage fluctuations
- Electromagnetic disturbances
- Vibrations and shocks
- Corrosive and chemical ambience
- Severe temperatures





Contribute to a better world — with Masterpact MTZ circuit breakers you can enhance sustainability.

- Total control over environmental impact of equipment
- Compliant with all European and international regulations and Green Premium ecolabel

RoHS

Our products are subject to RoHS requirements worldwide. This initiative aims to eliminate hazardous substances.

REACH

We apply the strict REACH regulation on our products worldwide. This discloses extensive information concerning the presence of substances of very high concern in products.

PEP: Product environmental profile

In compliance with the ISO 14025 PEP Eco passport program, we publish the most complete set of environmental data on all of our products.

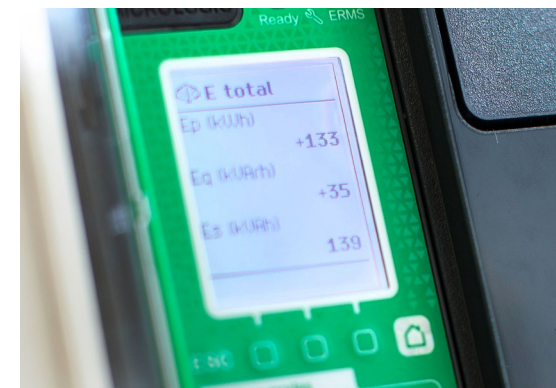
End-of-life instructions

Available at the click of a button, these instructions provide:

- Recyclability rates for Schneider Electric products
- Guidance to mitigate personnel hazards during the dismantling of products
- Parts identification for recycling or for selective treatment to mitigate environmental hazards/ incompatibility with standard recycling processes



The Schneider Electric Green Premium ecolabel is committed to offering transparency by disclosing extensive information related to the environmental impact of its products.



Innovation At Every Level

Masterpact MTZ circuit breakers offer innovative features that streamline system design, construction, and operation.

I design

Win more projects

Digital modules give you the ability to add functions based on one standard Micrologic X control unit, helping to reduce your initial investment in a project and making Masterpact MTZ circuit breakers scalable to future needs.

Design durable and compliant systems

Masterpact MTZ circuit breakers are compliant with electrical distribution and energy efficiency standards and regulations. Plus, they are tested and proven to withstand harsh conditions.

Create smart, flexible systems

Masterpact MTZ circuit breakers integrate seamlessly with Schneider Electric Smart Panels. The embedded Ethernet connection and a Class 1 power meter help to increase energy efficiency by providing comprehensive data on any building or power management system.



Innovation At Every Level

Masterpact MTZ circuit breakers offer innovative features that streamline system design, construction, and operation.

I build

Install and retrofit easily

The transition from Masterpact NT/NW circuit breakers to Masterpact MTZ circuit breakers doesn't require switchboard modification or IEC 61439 1 and 2 recertification.

Commission quickly

With Ecoreach software, you can integrate smart devices, commission connected switchboards, and generate comprehensive reports as part of factory and site acceptance tests.

Provide better service

Our partner programs offer tools, software, support, and loyalty awards to help you grow your business and meet your customers' needs with high-quality pre- and post-sale services.



Innovation At Every Level

Masterpact MTZ circuit breakers offer innovative features that streamline system design, construction, and operation.

I operate

Improve customer loyalty

Masterpact MTZ circuit breakers allow you to provide commissioning and maintenance reports to demonstrate your reliability and value to your customers or employer.

Make maintenance easier

Masterpact MTZ circuit breakers send alerts to your smartphone, helping you to diagnose problems quickly and avoid downtime. In case of power interruptions, the Power Crisis Assistant digital module guides you to the root cause and helps you restore power quickly.

Increase safety

Because Masterpact MTZ circuit breakers can be maintained wirelessly via Bluetooth and NFC connections, physical contact with the breaker is limited. Plus, the facility manager application provides guidance for the daily maintenance operation.





Offer more services and
get experienced support

..

.....

...

...

.....

Learn more

Discover EcoStruxure.™

Learn more about EcoStruxure Power.

See how EcoStruxure Power empowers
Nemour's Children's Hospital.

Contact us to start your journey.

Schneider Electric

35 rue Joseph Monier
92500 Rueil-Malmaison, France
Tel : +33 (0)1 41 29 70 00

©2017 Schneider Electric. All Rights Reserved.
Schneider Electric | Life Is On is a trademark and the property of Schneider Electric SE, its subsidiaries, and affiliated companies.
998-19879497_GMA-US

Life Is On

Schneider
Electric™